

# The IsoMed 2000 Family



**X-Series**

**Legpress**  
*athletic*

**Back Module**

**PUMP**  
**ROTATION**





Back Rotation Modul	Units
Max Torque	750NM (depends on Dynamometer data)
Max Speed	180°/s (optional 240°/s)
Testing/Trainings mode	Aktive / Assisitive (CPM) Isokinetic con/con ; con/ecc; ecc/con; ecc/ecc; Isometric

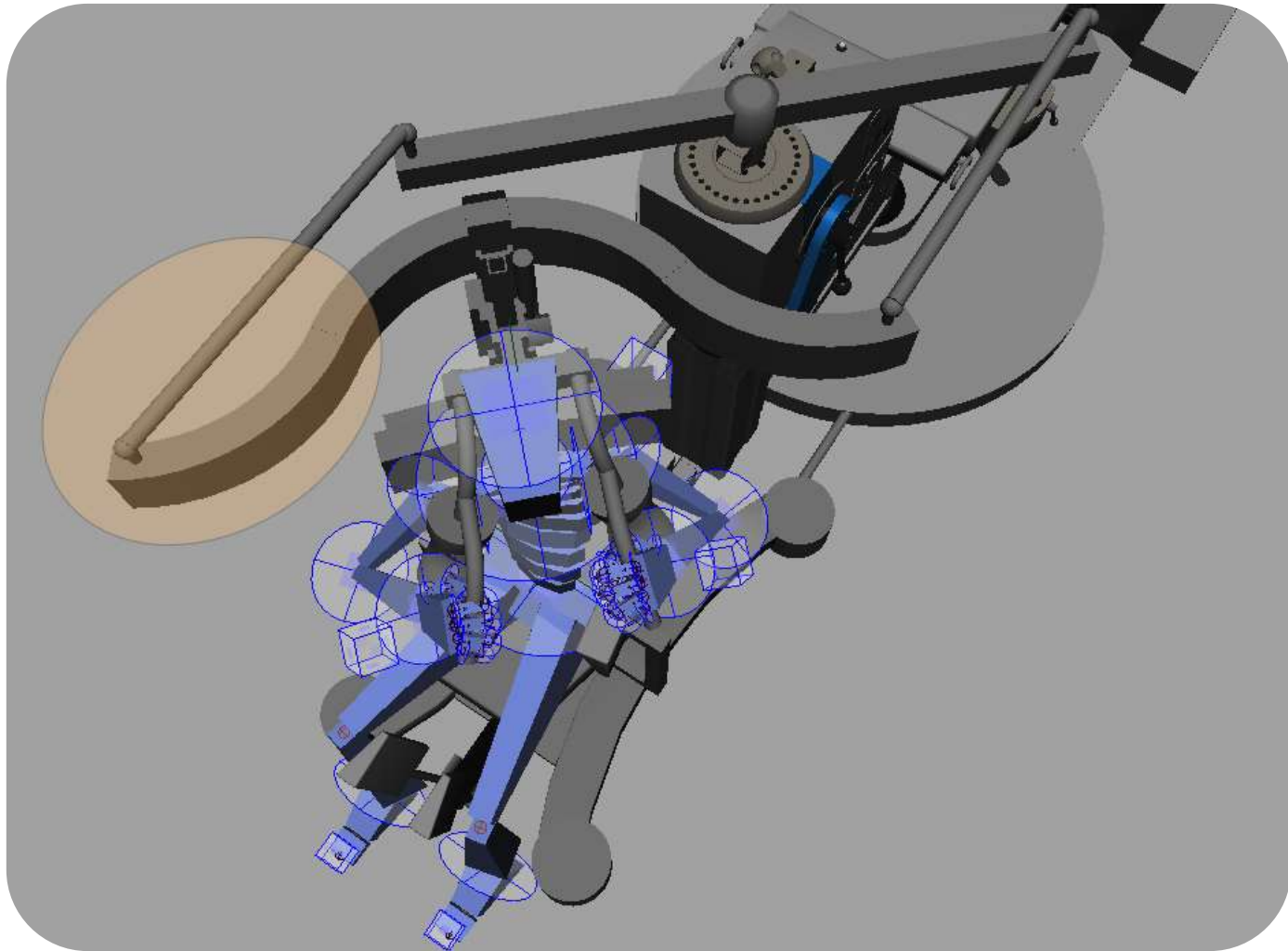


# RUMP ROTATION



Pic. Shows frontal position =  
version bevor 2010 actual there is  
only side position available





Pic. Shows frontal position =  
version bevor 2010 actual there is  
only side position available













